

**FEV Antibody (N-Term)**  
**Purified Rabbit Polyclonal Antibody (Pab)**  
**Catalog # AP21664a****Specification**

---

**FEV Antibody (N-Term) - Product Information**

Application	WB,E
Primary Accession	<a href="#">Q99581</a>
Reactivity	Mouse
Host	Rabbit
Clonality	polyclonal
Isotype	Rabbit IgG
Calculated MW	25030

**FEV Antibody (N-Term) - Additional Information****Gene ID** 54738**Other Names**

Protein FEV, Fifth Ewing variant protein, PC12 ETS domain-containing transcription factor 1, PC12 ETS factor 1, Pet-1, FEV, PET1

**Target/Specificity**

This FEV antibody is generated from a rabbit immunized with a KLH conjugated synthetic peptide between 53-86 amino acids from human FEV.

**Dilution**

WB~~1:2000

E~~Use at an assay dependent concentration.

**Format**

Purified polyclonal antibody supplied in PBS with 0.09% (W/V) sodium azide. This antibody is purified through a protein A column, followed by peptide affinity purification.

**Storage**

Maintain refrigerated at 2-8°C for up to 2 weeks. For long term storage store at -20°C in small aliquots to prevent freeze-thaw cycles.

**Precautions**

FEV Antibody (N-Term) is for research use only and not for use in diagnostic or therapeutic procedures.

**FEV Antibody (N-Term) - Protein Information****Name** FEV**Synonyms** PET1

**Function** Functions as a transcriptional regulator. According to PubMed:[12761502](#), it functions as a transcriptional repressor. Functions in the differentiation and the maintenance of the central serotonergic neurons. May play a role in cell growth.

**Cellular Location**

Nucleus {ECO:0000255|PROSITE-ProRule:PRU00237, ECO:0000269|PubMed:12761502}

**Tissue Location**

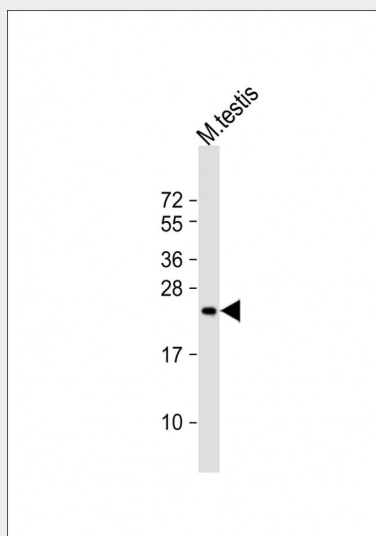
In brain, exclusively expressed in the major serotonergic neurons of the dorsal and median raphe nuclei located in the midbrain and pons. Also detected in prostate and small intestine

**FEV Antibody (N-Term) - Protocols**

Provided below are standard protocols that you may find useful for product applications.

- [Western Blot](#)
- [Blocking Peptides](#)
- [Dot Blot](#)
- [Immunohistochemistry](#)
- [Immunofluorescence](#)
- [Immunoprecipitation](#)
- [Flow Cytometry](#)
- [Cell Culture](#)

**FEV Antibody (N-Term) - Images**



Anti-FEV Antibody (N-Term) at 1:2000 dilution + mouse testis lysate Lysates/proteins at 20 µg per lane. Secondary Goat Anti-Rabbit IgG, (H+L), Peroxidase conjugated at 1/10000 dilution. Predicted band size : 25 kDa Blocking/Dilution buffer: 5% NFDM/TBST.

**FEV Antibody (N-Term) - Background**

Functions as a transcriptional regulator. According to PubMed:12761502, it functions as a transcriptional repressor. Functions in the differentiation and the maintenance of the central serotonergic neurons. May play a role in cell growth.

**FEV Antibody (N-Term) - References**

Peter M.,et al.Oncogene 14:1159-1164(1997).  
Hillier L.W.,et al.Nature 434:724-731(2005).  
Mural R.J.,et al.Submitted (JUL-2005) to the EMBL/GenBank/DDBJ databases.  
Maurer P.,et al.Oncogene 22:3319-3329(2003).  
Maurer P.,et al.Neurosci. Lett. 357:215-218(2004).